

# NEWS JOURNAL

“Members Helping Members”

October 2023

(since 1983)

Volume 40, Issue 06



A YubiKey is a type of physical authentication device that uses encryption and private keys to protect and unlock supported accounts.

YubiKeys are based on the Universal 2nd Factor (U2F) open standard, which was developed by Google and Yubico in 2012.

## Differences between passkeys and YubiKeys:

### Passkeys:

- Can be stored on devices or in the cloud.
- Can be used to sign into websites and apps without having to enter a username or password.
- Are still under development but are expected to become widely available in the next few years.

### YubiKeys:

- Are physical devices that must be plugged into a USB port or tapped against an NFC reader?
- Can only be used to sign into websites and apps that support U2F authentication.
- Are widely available today.

## Passkey vs. YubiKeys:

New ways to protect your access to your accounts.

*Compiled by Jasmine Blue D’Katz*

While attending the MSCIG (Minnetonka Seniors Computer Interest Group) meeting, the discussion came up about the difference between a Passkey and YubiKey, so I decided to explain the difference.

A passkey is a new type of digital credential that is designed to be more secure and convenient than passwords. Passkeys are based on public-key cryptography, which is the same technology that is used to secure HTTPS connections and online payments.

*"Members Helping  
Members"  
(since 1983)*

### **Board of Directors**

2023-2024

#### **President**

Mike McEnery  
[president@lcace.org](mailto:president@lcace.org)

#### **Vice President**

[vicepresident@lcace.org](mailto:vicepresident@lcace.org)

#### **Secretary**

Bobby Jacobs  
[secretary@lcace.org](mailto:secretary@lcace.org)

#### **Treasurer**

Linda Busch  
[treasurer@lcace.org](mailto:treasurer@lcace.org)

#### **Programs**

David Carlson  
[programs@lcace.org](mailto:programs@lcace.org)

#### **Membership**

Diane Carlson  
[membership@lcace.org](mailto:membership@lcace.org)

#### **Public Relations**

Linda Koudelka  
[pr@lcace.org](mailto:pr@lcace.org)

#### **Volunteers**

#### **Webmaster**

J.J. Johnson  
[webmaster@lcace.org](mailto:webmaster@lcace.org)

#### **Newsletter Editor**

Cynthia Simmons  
[editor@lcace.org](mailto:editor@lcace.org)

# Lake County Area Computer Enthusiasts

c/o Group Ambassador

"J.J." Johnson

## News Journal

*The LCACE News Journal* is published eleven times annually. Members are encouraged to submit contributions which will be acknowledged in this newsletter. Send articles to [editor@lcace.org](mailto:editor@lcace.org) Permission is granted to reproduce any or all parts of this newsletter in other User Group publications, provided that credit is given to LCACE and the individual author (s). Logo designed on an Atari Stacy Laptop in 1989 by Dwight Johnson Jr.

## Membership

LCACE membership is open to all individuals and families interested in personal computing. Annual dues are \$20.00 per individual/family. Applications for membership may be obtained at the monthly meeting, by request on the club hotline, and are now available on our web site at <http://www.lcace.org>.

## Meetings

LCACE meetings are usually held on Saturdays at the Grayslake Area Public Library, 100 Library Lane, Grayslake, Illinois. The meeting room opens at noon and the formal meeting begins at 12:30 p.m. All meetings are open to the public. Bring a friend!

## Newsletter Submissions

Club members are welcome to submit classified ads, reviews, tips and other articles for publication, to our newsletter editor in Microsoft Word format (.doc).

**Publication deadline is the 20th of the month for all ads and articles.**

Please do not use tabs or special formatting.

## Newsletter Advertising

Ad rates per issue: Full page - \$25, Half page - \$15, Quarter page - \$10, Business Card - \$5. Discounts are available on advance purchase of multiple issues. Please send camera-ready copy and payment to the club address by the 15th of the month preceding publication. For more information on ad pricing, please call our Hotline. Ads are **FREE** to all paid members.

## NOTICE

*LCACE WILL NOT CONDONE or knowingly participate in copyright infringement of any kind.* The *LCACE News Journal* is published by and for LCACE members. Opinions expressed herein are those of the individual authors and do not necessarily reflect the opinion of LCACE, the membership, the board of directors, and/or our advertisers.



(Continued from page 1)

Another way to think about the difference between passkeys and YubiKeys is that passkeys are a new type of digital credential, while YubiKeys are a type of physical authentication device.

### Which is better?

Passkeys and YubiKeys both offer advantages over passwords, but they are also different in some keyways.

Passkeys are more convenient, they can be used to sign into websites and apps without entering a username or password. Passkeys are also more secure than YubiKeys, as they can be stored on devices or in the cloud, which makes them less vulnerable to theft or loss.

However, passkeys are still under development and are not yet widely supported. But YubiKeys are widely available today and are supported by

a wide range of websites and apps.

Which one you should choose depends on your individual needs and preferences. If you are looking for the most convenient and secure way to sign into websites and apps, then passkeys are the better option. However, if you need a solution that is widely available today, then a YubiKey is a good choice.

You can also use a YubiKey as a passkey. Some YubiKeys support the FIDO2 standard, which allows them to be used as passkeys. This means that you can use a YubiKey to sign into websites and apps without having to enter a username or password, even if the website or app does not support U2F authentication.

If you are not sure whether to choose a passkey or a YubiKey, I recommend that you choose a YubiKey that supports the FIDO2 standard. This will give you the flexibility to use the key as a passkey in the future, once passkeys are more widely supported.

<https://www.pcmag.com/news/google-rolls-out-passkeys-for-workspace-cloud-accounts>

## Google Rolls Out Passkeys for Workspace, Cloud Accounts

The feature should be available to everyone with a Workspace account by June 20 if admins turn it on. Passkeys only require a trusted device and either biometric or PIN verification.



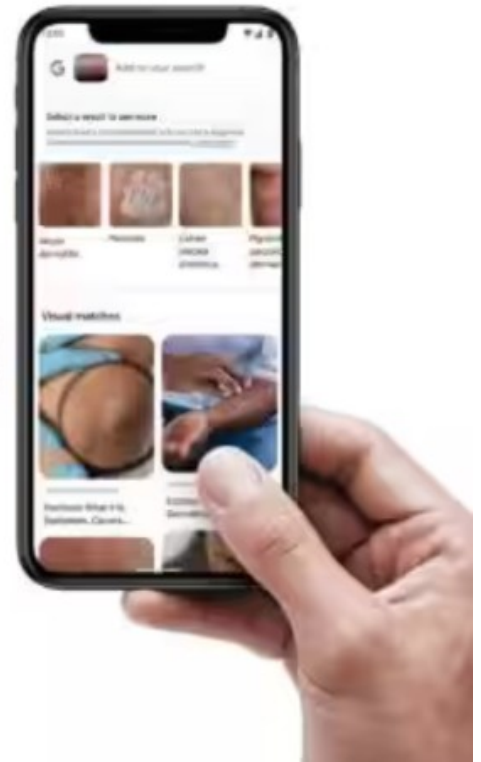
By [Marco Marcelline](#)

June 6, 2023





# Google Lens



## Google Lens

*Compiled by Jasmine Blue D’Katz*

Google Lens is a visual search tool that uses machine learning to identify objects and provide information about them. It can be used to translate text, identify plants and animals, explore locales or menus, discover products, find visually similar images, and take other useful actions.

Google Lens was first introduced in 2017, and it has since become one of the most popular visual search tools available. It is integrated into many Google products, including the Google Photos app, the Google Search app, and Google Assistant.

### How Google Lens works

Google Lens uses a combination of machine learning and computer vision techniques to identify objects and provide information about them. It works by first extracting features from the image, such as edges, corners, and colors. It then uses these features to match the image to a database of known objects.

Once Google Lens has identified an object, it

can provide a variety of information about it. For example, if you point Google Lens at a plant, it can identify the plant species and provide information about its care and watering instructions. If you point Google Lens at a restaurant menu, it can translate the menu into your language and provide information about the dishes.

### What Google Lens can do

Google Lens can be used to do a wide variety of things, including:

**Translate text:** Google Lens can translate text from one language to another in real time. This can be useful if you are traveling to a foreign country or if you are trying to read a menu that is in a different language.

**Identify plants and animals:** Google Lens can identify over a million different plant and animal species. This can be useful if you are hiking and you want to know what kind of plant you are looking at, or if you are at a zoo and you want to know what kind of animal is in a particular enclosure.

**Explore locales or menus:** Google Lens can provide information about the places and things you see around you. For example, if you point Google Lens at a building, it can tell you what kind of building it is and its history. If you point Google Lens at a restaurant menu, it can provide information about the dishes and translate the menu into your language.

**Discover products:** Google Lens can scan barcodes and QR codes to identify products and provide information about them. This can be useful if you are shopping and you want to compare prices or learn more about a product.

**Find visually similar images:** Google Lens can find visually similar images to the image you are looking at. This can be useful if you are trying to find a higher-quality version of an image or if you are trying to find the source of an image.

### **How to use Google Lens**

To use Google Lens, you can either open the Google Lens app or use the Google Lens feature in the Google Photos app or the Google Search app.

To use the Google Lens app, simply open the app and point your camera at the object you want to identify. Google Lens will automatically identify the object and provide information about it.

To use the Google Lens feature in the Google Photos app or the Google Search app, simply open the app and tap the Google Lens icon. Then, point your camera at the object you want to identify. Google Lens will automatically identify the object and provide information about it.

### **Google Lens features**

Google Lens offers a variety of features that make it a powerful visual search tool. Some of these features include:

**Real-time translation:** Google Lens can

translate text from one language to another in real time. This can be useful if you are traveling to a foreign country or if you are trying to read a menu that is in a different language.

**Multi-language support:** Google Lens supports over 100 languages. This means that you can use Google Lens to translate text from one language to another in real time, even if the languages are not the same.

**Image search:** Google Lens can find visually similar images to the image you are looking at. This can be useful if you are trying to find a higher-quality version of an image or if you are trying to find the source of an image.

**Shopping:** Google Lens can scan barcodes and QR codes to identify products and provide information about them. This can be useful if you are shopping and you want to compare prices or learn more about a product.

**Object identification:** Google Lens can identify over a million different objects, including plants, animals, places, and products. This can be useful if you are hiking and you want to know what kind of plant you are looking at, or if you are at a zoo and you want to know what kind of animal is in a particular enclosure.

### **Google Lens pros:**

**Versatility:** Google Lens can be used for a wide variety of tasks, including translating text, identifying plants and animals, exploring locales or menus, discovering products, finding visually similar images, and taking other useful actions.

**Accuracy:** Google Lens is very accurate at identifying objects and providing information about them.

**Ease of use:** Google Lens is very easy to use. Simply point your camera at the ob-

## Google Lens pros:

**Versatility:** Google Lens can be used for a wide variety of tasks, including translating text, identifying plants and animals, exploring locales or menus, discovering products, finding visually similar images, and taking other useful actions.

**Accuracy:** Google Lens is very accurate at identifying objects and providing information about them.

**Ease of use:** Google Lens is very easy to use. Simply point your camera at the object you want to identify and Google Lens will provide you with the information you need.

**Integration:** Google Lens is integrated into many Google products, including the Google Photos app, the Google Search app, and Google Assistant. This makes it easy to use Google Lens from anywhere.

**Free to use:** Google Lens is a free service. There are no in-app purchases or subscriptions required.

## Here are some specific examples of how Google Lens can be used:

A student can use Google Lens to scan a math problem and get help solving it.

A shopper can use Google Lens to scan a barcode and compare prices online.

A traveler can use Google Lens to translate a sign or menu in a foreign language.

A hiker can use Google Lens to identify a plant or animal.

A homeowner can use Google Lens to identify a pest or disease.

A mechanic can use Google Lens to identify a car part.

Overall, Google Lens is a powerful and versatile visual search tool that can be used for a wide variety of tasks. It is easy to use and is integrated into many Google products.



<https://www.techforsenior.com>

## Tech for Seniors

Hosted by Ron Brown & Hewie Poplock

Every Monday from  
9-10 AM PT/ 12-1 PM ET

Broadcast with ZOOM

## Sites Hewie Poplock

### Recommends

#### Tech for Seniors Facebook:

<https://facebook.com/techforsenior>

#### YouTube:

<https://www.youtube.com/c/TechforSenior>

#### Tech for Senior website:

<https://www.techforsenior.com/home>

## Signup for Newsletters:

#### Tech for Seniors:

<https://www.techforsenior.com/>

#### Hewie's News & Reviews / WinSIG:

<https://hewie.net>

#### Hewie's Channel :

<https://www.youtube.com/c/HewiePoplock>

#### Tech For Seniors Channel:

<https://www.youtube.com/c/TechforSenior>

#### Bob G's Channel:

<https://youtube.com/user/bob3160>



## Simplify your life with these smartphone apps

Visit [play.google.com](http://play.google.com) or open your iTunes application and search within the App Store to download these.

App name	How it works
Flashlight	Turns your screen into a flashlight
Google Maps	Provides maps and directions using GPS
Dragon Dictation*	Lets you send texts and emails without typing
GasBuddy	Finds cheap fuel in your area
FaceTime*	Allows video chats with friends and family
Triplt	Organizes flights, hotel reservations, and more
Laser Level	Helps hang pictures straight
Lose It	Lets you create and follow a diet plan
RedLaser	Compares prices by scanning bar codes while you shop
The Weather Channel	Keeps up with local weather
iPharmacy Drug Guide & Pill ID	Identifies your pills and finds lowest drug prices
Tip Calculator	Computes your tip and splits the bill among friends



\*iPhone only

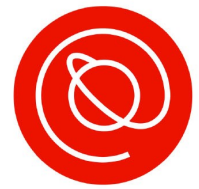
## Members Helping Members

*Just think you could have submitted a paragraph or two that would help your fellow Members*



**Ctrl+ click white arrow to go to our YouTube site**

# Free Online Classes for Older Adults!



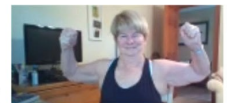
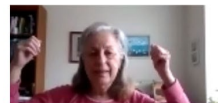
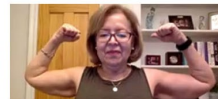
Senior Planet from AARP is a nonprofit that helps older adults use technology to learn digital skills, stay active, and meet new friends.



[www.seniorplanet.org](http://www.seniorplanet.org)



888-713-3495



- Meet interesting people
  - Learn to use Zoom & video chat
  - Find low-cost internet options
  - Participate in a virtual book club
  - Discover tools for job-searching
  - Exercise with fitness classes like "Morning Stretch" or Tai Chi
- ...and so much more, all for FREE!

## SENIOR PLANET FROM AARP

SENIOR PLANET FROM AARP

Free Tech & Fitness Classes!  
[www.seniorplanet.org](http://www.seniorplanet.org)

888-713-3495

SENIOR PLANET FROM AARP

Free Tech & Fitness Classes!  
[www.seniorplanet.org](http://www.seniorplanet.org)

888-713-3495

SENIOR PLANET FROM AARP

Free Tech & Fitness Classes!  
[www.seniorplanet.org](http://www.seniorplanet.org)

888-713-3495

SENIOR PLANET FROM AARP

Free Tech & Fitness Classes!  
[www.seniorplanet.org](http://www.seniorplanet.org)

888-713-3495

SENIOR PLANET FROM AARP

Free Tech & Fitness Classes!  
[www.seniorplanet.org](http://www.seniorplanet.org)

888-713-3495

SENIOR PLANET FROM AARP

Free Tech & Fitness Classes!  
[www.seniorplanet.org](http://www.seniorplanet.org)

888-713-3495

SENIOR PLANET FROM AARP

Free Tech & Fitness Classes!  
[www.seniorplanet.org](http://www.seniorplanet.org)

888-713-3495

SENIOR PLANET FROM AARP

Free Tech & Fitness Classes!  
[www.seniorplanet.org](http://www.seniorplanet.org)

888-713-3495

SENIOR PLANET FROM AARP

Free Tech & Fitness Classes!  
[www.seniorplanet.org](http://www.seniorplanet.org)

888-713-3495



October 21, 2023

# zoom

Joining a Meeting

October 21, 2023

## Computer Services

**Desktops,  
Laptops,  
All-in-Ones  
and more**



During our October Zoom meeting the following two computer services were mentioned.

### White Box Computers

They say they are the place for all your computer repairs & upgrades at nearly half the prices of the competition.

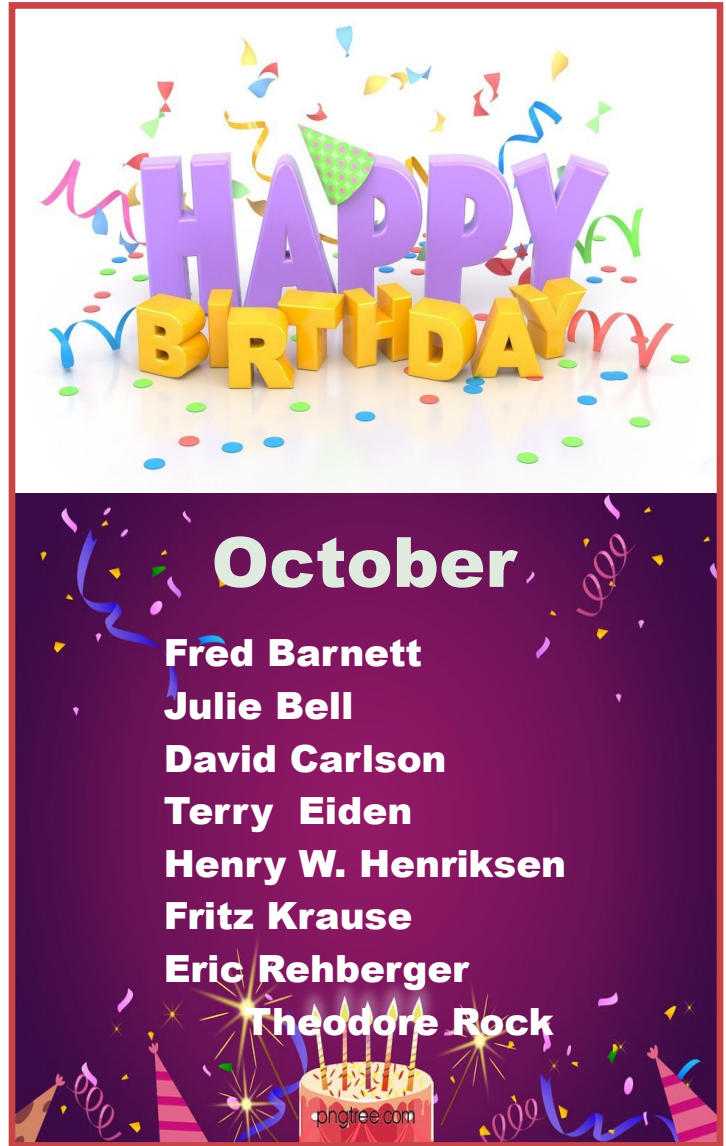
<https://whiteboxcomputers.org>

847-833-9324

### ZYTEK Services

Has been around for over 30 years and offers the best in fast, friendly, high-quality, fair price computer service solutions

847-336-2259



Member's Area



**BUSINESS CARDS**

**Hotline**





**Phone: (847) 623-3815**



**Pegasus**  
OPEN AIR PHOTOBOOTH

847.372.8186  
pegasusphotos.smugmug.com

**Members**



**JIM JACOBS TRIO**  
*Jazz Standards*  
THURSDAYS 6:00-9:00 PM



*Deerfield Italian Kitchen*

CONTACT JIM AT 847.372.0656 OR JIMJACOBSMUSIC@GMAIL.COM

Take a good look, you just might see yourself.




LCACE Photo Albums

**Liz Barnett**  
Chief Cookie Baker



Phone: 847-494-4222  
E-mail: Liz@LoveMyCookies.com

www.LoveMyCookies.com  
www.facebook.com/LoveMyCookiesLizB

*Custom Cookie Treats for any Occasion!*

**Genealogy Your Way**  
Special Computer Services



Bobby Jacobs  
847-372-0660  
bobby@scs4now.com  
scs4now.com

**LAKE COUNTY HONOR FLIGHT**

847.282.0374  
info@lakecountyhonorflight.org



P.O. Box 1187, North Chicago, IL 60064  
www.lakecountyhonorflight.org

Member of



**An International Association of Technology & Computer User Groups**