



# NEWS JOURNAL

MEMBERS HELPING MEMBERS  
(SINCE 1983)

April 2025

Volume 42, Issue 01

LCACE  
42  
YEARS  
MEMBERS HELPING MEMBERS

*"Members Helping  
Members"  
(since 1983)*

## **Board of Directors**

2024-2026

### **President**

Diane Carlson  
[president@lcace.org](mailto:president@lcace.org)

### **Vice President**

Mike McEnery  
[vicepresident@lcace.org](mailto:vicepresident@lcace.org)

### **Secretary**

**OPEN**  
[secretary@lcace.org](mailto:secretary@lcace.org)

### **Treasurer**

Linda Busch  
[treasurer@lcace.org](mailto:treasurer@lcace.org)

### **Programs**

Lester Larkin  
[programs@lcace.org](mailto:programs@lcace.org)

### **Membership**

**OPEN**  
[membership@lcace.org](mailto:membership@lcace.org)

### **Public Relations**

Linda Koudelka  
[pr@lcace.org](mailto:pr@lcace.org)

### **Volunteers**

### **Newsletter Editor**

Cynthia Simmons  
[editor@lcace.org](mailto:editor@lcace.org)

### **Hospitality**

Judy and Eric  
Rehberger  
[hospitality@lcace.org](mailto:hospitality@lcace.org)



L.C.A.C.E.

# **Lake County Area Computer Enthusiasts**

## **News Journal**

*The LCACE News Journal* is published eleven times annually. Members are encouraged to submit contributions which will be acknowledged in this newsletter. Send articles to [editor@lcace.org](mailto:editor@lcace.org). Permission is granted to reproduce any or all parts of this newsletter in other User Group publications, provided that credit is given to LCACE and the individual author(s). Logo designed on an Atari Stacy Laptop in 1989 by Dwight Johnson Jr.

## **Membership**

LCACE membership is open to all individuals and families interested in personal computing. Annual dues are \$20.00 per individual/family. Applications for membership may be obtained at the monthly meeting, by request on the club hotline, and are now available on our web site at <http://www.lcace.org>.

## **Meetings**

LCACE meetings are open to the public and usually held on the second Saturday of the month at Alto, 1865 E. Belvidere Rd., Grayslake, IL 60030. At 12 noon, the meeting room opens for a free help desk and socializing until 12:30 p.m. The business meeting starts at 12:30 and the presentation starts at 1 p.m.

## **Newsletter Submissions**

Club members are welcome to submit classified ads, reviews, tips and other articles for publication, to our newsletter editor in Microsoft Word format (.doc).

**Publication deadline is the 20th of the month for all ads and articles.**

Please do not use tabs or special formatting.

## **Newsletter Advertising**

Ad rates per issue: Full page - \$25, Half page - \$15, Quarter page - \$10, Business Card - \$5. Discounts are available on advance purchase of multiple issues. Please send camera-ready copy and payment to the club address by the 15th of the month preceding publication. For more information on ad pricing, please call our Hotline. Ads are **FREE** to all paid members.

## **NOTICE**

*LCACE WILL NOT CONDONE or knowingly participate in copyright infringement of any kind.* The *LCACE News Journal* is published by and for LCACE members. Opinions expressed herein are those of the individual authors and do not necessarily reflect the opinion of LCACE, the membership, the board of directors, and/or our advertisers.

# Table of Contents

1. 42 Years
4. Letter From an Editor
5. Letter of Appreciation from Publisher
- 6-7 Why I am a Morning Person  
Lynda Buske
8. Google Lens
9. Messages vs. Messenger
10. Members Business Cards

# MEETING

## April 12th Program



What is AI and how can I use it today?

**By Ron Truman**

Computer Booter



# Geezer Tek

Technology for the Age Challenged



### AI for Older Adults

AI promises to change the way we live and work, but what is it really, and what does it mean for older adults? This guide provides the facts about this new technology: the benefits, the risks, and how it can address the distinctive health-related, financial and lifestyle needs of people age 50+.

**SENIOR PLANET**  
FROM AARP



The doldrums of winter are fading away to the bright, sunny days of Spring! April showers bring May flowers!

At our last LCACE meeting I had presented several ideas for the members. Based on the feedback from the membership check in sheets, we will be implementing several of them.

Many members are interested in getting information about senior events happening around Lake County. There will be a new column added to the newsletter listing such events. There will be a new email group created for members that wish to receive information about upcoming events. Any of the members will be able to post an email about these events.

I have spoken about the need to have people volunteer to take on a board position. The LCACE board recommended having a "Core" group of people willing to attend board meetings and participate in discussions about the club. Joining the core group is not a commitment for any length of time. It allows the person to contribute to the running of the club and also use their talents for small projects. An email group will be created for those interested in being a part of the core group. Several members have already volunteered to be a part of this endeavor.

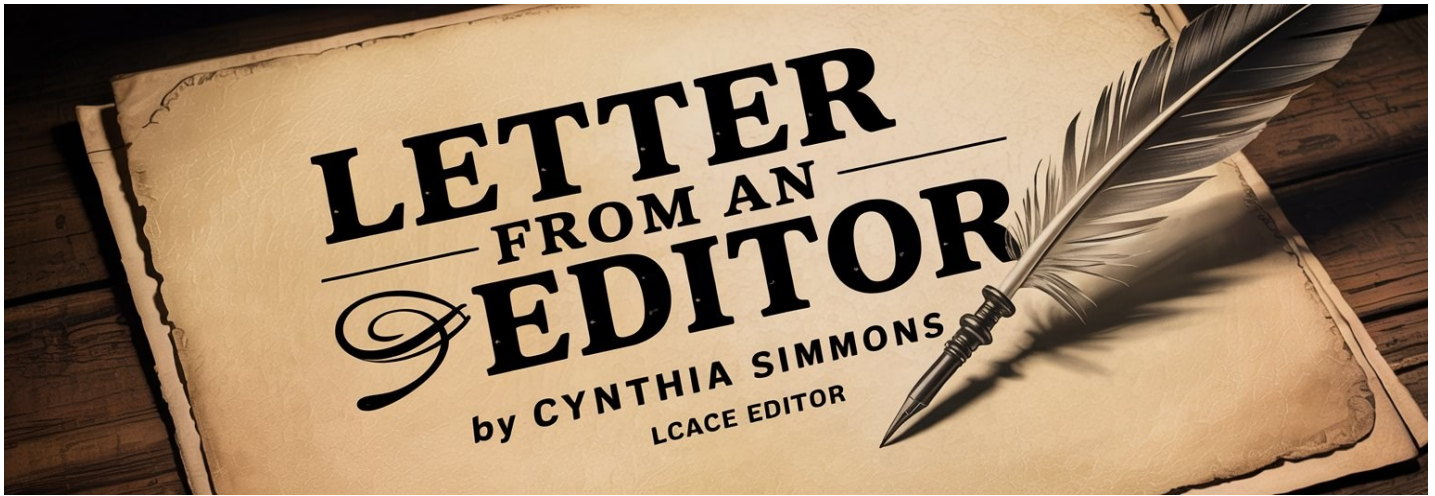
At the last board meeting we reviewed switching to a new email group called IO.group. We have had issues with getting people access to the Google groups we currently have. IO.group has more flexibility in adding the various types of email addresses such as .net and sbcglobal.net. In the next few weeks, we will begin converting to IO.groups. You will be receiving an email invitation from IO.group to join a group. Please respond back to the email so your address can be entered. Until everyone has been added to IO.group, you will still be receiving email from Google groups. Using IO.group will help us maintain a more accurate list of who wants to get our various emails.

It's that time of year again. The club membership runs from April 30<sup>th</sup>, 2025 to April 30<sup>th</sup>, 2026. The dues are \$20 per individual or family. These dues provide us funds to 'keep the lights on' for the club such as affiliation with APCUG, software maintenance, funds for our 2 parties and other expenditures. If you have not done so, please try to pay your dues at the next meeting.

If you have questions or concern about the club, please contact one of the board members listed at the beginning of the newsletter.

*Diane Carlson*

LCACE President



The April 2025 issue completes two years of my tenure as the LCACE *News Journal* newsletter editor. This is the last issue to be produced by me as the editor. I'm saying goodbye.

It has been an honor and a privilege to work with, or in many cases for, J.J. Johnson, the club founder and long-term leader. In practice I have been an Assistant Editor to J.J.'s Managing Editor role. J.J. has definitely been the senior member of the editorial team.

I enjoyed working with J.J. "in the driver's seat" because I've worked on a number of newsletters over the years and this time I could sit back and benefit from his expertise in technology and graphic design. I exchanged the driver's seat for a front row seat in order to have this learning experience.

Outside of LCACE I am a trained and certified, professional editor. I completed Certificates for Editing at the University of Chicago and the University of California-San Diego.

Who is J.J. and what does he still bring to LCACE?

I see him as someone who has passion, drive, and excellence.

Many of the *News Journal* articles were written by J.J. using pseudonyms. J.J. liaisons with APCUG. He is a known resource for other clubs because he actively participates as a member in these other clubs, volunteering his knowledge and his presentation and research skills to help others develop their own technical skills.

As a life-long learner myself, I highly value individuals who excel and share their knowledge.

Among my "lessons learned" as an LCACE member -- Be cautious when accepting technical help outside of club meetings. We are all volunteers and no one is backed by a company warrantee.

I haven't worked closely with Diane Carlson, but I wish her well as she begins her second year as the LCACE Board President. I wish to thank all of the other volunteers with whom I have worked.

I plan to continue my LCACE membership. But I will not be an active volunteer. I need to deal with some personal obligations, including getting my eyes worked on. As a former long-distance bicycle rider, the warm weather is teasing my attention toward open roads and long, slow, lazy days bicycling. (With many stops along the way to smell the roses.)

Thank you for this opportunity.

**Cynthia Simmons**

cynthia.g.simmons@gmail.com



# *Letter of Appreciation for Cynthia*



*It has been my privilege to publish the LCACE Newsletter Journal for over forty years. During this time, I've worked with several exceptional editors, each understanding that this role requires dedication and a genuine desire to share valuable information with our club members.*

*When Cynthia volunteered to become editor following Mike McEnery's departure after his impressive twenty-year tenure, she embraced the responsibility with enthusiasm and skill. It has been a true pleasure collaborating with her over the past two years.*

*I am saddened by Cynthia's decision to step down, though I understand her reasons. Her contributions have been remarkable—under her editorship, our newsletter received an annual award from APCUG and earned high praise from other clubs with whom we exchange newsletters. Her commitment to quality and service to our community never wavered.*

*I wish Cynthia the very best in all her future endeavors. As for the future direction of our club's newsletter and who might assume the editor position, that remains to be determined in the coming months.*

*J. J. Johnson*

LCACE Founder



On April 9, 2025, the Lake County Area Computer Enthusiasts (LCACE), formerly known as the Lake County Atari User Group, proudly celebrates 42 years of its motto, "Members Helping Members," in Northern Illinois.

The journey began with my acquisition of an Atari 800 computer. A pamphlet inspired me to form an Atari User Group, and after securing a facility and posting flyers in the community, the club was born. On a cold, rainy day, several curious Atari enthusiasts gathered at the Great Lakes Community Center for our first meeting. These early sessions were opportunities to share knowledge and learn about our new computers. Over time, the group grew to over 175 members and became part of a global network of hundreds of Atari computer clubs.

A highlight of our Atari days was attending computer shows at the Lake County Fairgrounds and hosting three successful Atari Computer Fests. After two well-received events, Atari Corporation approached us to host a show in Chicago—despite two larger clubs in the area. Our proven success earned us this honor, and on a snowy November day, we welcomed over 3,000 attendees to a highly successful fest.



In those early years, we produced a monthly news-

letter using my Atari 800 computer with a 40-column text writer and printer. The process involved cutting and pasting to create a two-column layout. Later, with the advent of AtariWriter and an 80-column dot-matrix printer, production became more efficient. At our peak, we mailed nearly 200 newsletters monthly and exchanged them with other clubs nationwide.



Following Atari's decline in 1991, LCACE transitioned into a PC-focused club while maintaining its commitment to helping members. Over time, our membership evolved into a community of older adults seeking support with modern technology. Despite changes in location—from the Great Lakes Community Center (later converted into a childcare center) to stops at Libertyville Library, Ingleside Township Building, Gurnee Public Library (briefly), and finally the Grayslake Public Library for over 15 years—our mission has remained steadfast.

Other cherished memories include summer picnics at St. Mary's Forest Preserve and holiday parties with

*(Continued on page 8)*

(Continued from page 7)

raffles. JoAnn Gayomali surprised everyone by bringing a turkey to the Ingleside holiday party, which eventually became a cherished tradition. The holiday was also known for the love of Pralines and Cream ice cream."

For those who recall the era before email and the internet, LCACE members ran three Bulletin Board Systems (BBS), forming what we called the "Tri-City System." These BBS platforms allowed enthusiasts to dial in (at speeds of 300–2400 baud) to exchange messages and download public domain software.

The BBS era was certainly a magical time for computer enthusiasts! We were deeply involved in the Atari modding scene, which was incredible for its time. The creativity in burning custom EPROMs to enhance your systems and even emulate entirely different operating environments like CP/M and



DOS shows the true hacker spirit of that era.

Several of our members had the opportunity to work for Atari at the Consumer Electronics Show in Chicago. This gave them an up-close look and hands-on experience with the new Atari line of computers. Their reward was a choice of equipment to take home.

That transition from Atari to PC user groups maintaining the hands-on approach is fascinating. There's something uniquely satisfying about building complete systems during meetings - a shared

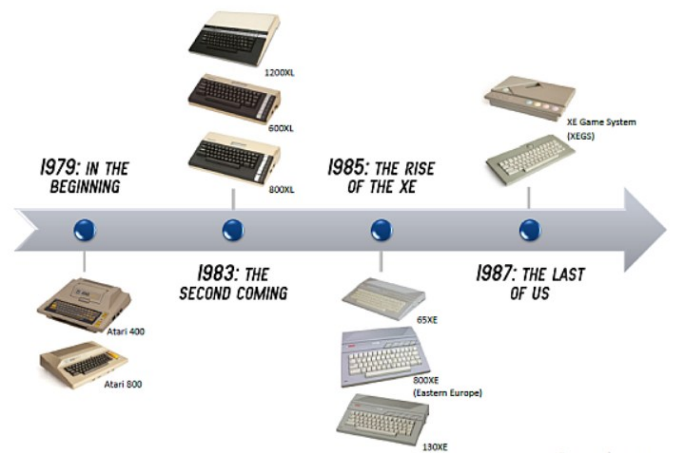
experience of creation that brought people together around the technology.

The club benefited from excellent leadership that prioritized member service. By keeping meetings open and accessible to the public, the club maintained a stable membership base.

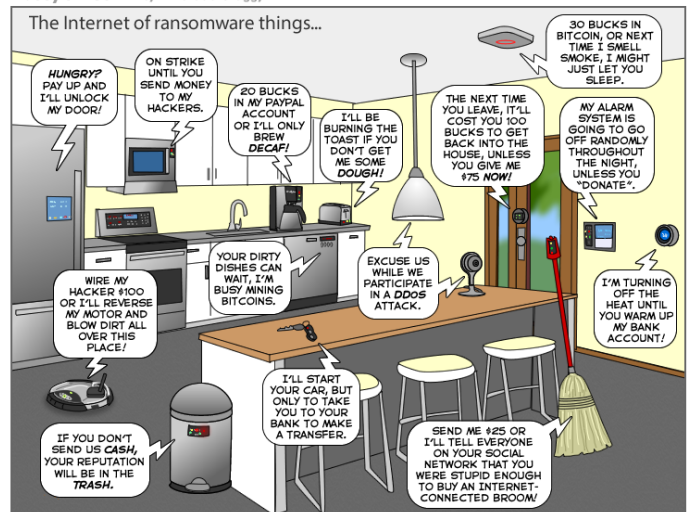
While membership has declined over the years, LCACE remains dedicated to its founding principle: "Members Helping Members." As we celebrate 42 years of community and learning, we look forward to continued growth and service in the years ahead.



The Atari 8-Bit Home Computer timeline



The Joy of Tech™ by Nitrozac & Snaggy



You can help us keep the comics coming by becoming a patron!  
[www.patreon.com/joyoftech](http://www.patreon.com/joyoftech)

[joyoftech.com](http://joyoftech.com)

# Why I am a Morning Person!

**By Lynda Buske**

Published in *Ottawa PC News* (October 2023)  
Ottawa PC Users' Group, Ontario, Canada

<https://opcug.ca>

Editor: brigittelord(at)opcug.ca

In a previous column, I wrote about taking photographs in the evening or nighttime. ([https://opcug.ca/Photography/EveningPhotography\\_v3.pdf](https://opcug.ca/Photography/EveningPhotography_v3.pdf)). However, I prefer to shoot in the morning, especially during the blue hour before the sun comes up. While not everyone wants to get up that early (often 4 am in the summer), there are some definite advantages and photo opportunities that you don't get in the evening.

Technically, many of the tips are similar, like compensating for low light by using a tripod, opening aperture wide (small f-stop number), bumping your ISO (sensitivity to light), or perhaps using a cell phone, which tends to cope with low light situations well. When my phone is set to "night sight," it takes multiple short exposures and combines the images into a single, appropriately exposed photo.

However, this column will discuss the non-technical advantages of shooting pre-dawn rather than post-sunset (the two blue hours). These tips, however, apply mostly to landscape photography; if you like to shoot the city nightlife, you will not find much going on in the morning. If someone is still partying, then they are probably not worth photographing!

Depending on the time of year, there is a good chance you can catch some interesting frost or mist during the morning blue hour. Both often disappear shortly after dawn when the sun burns off fog or melts frost.

Birds get very active just after dawn. It is not just sheer luck catching migratory geese at dawn. You can hear them getting excited in the dark, and the minute the sun rises, they take off.

I find the early morning very relaxing. There is less city noise from traffic, especially in the summer



when it is way before rush hour. Roads in the evening, regardless of the time of year, are busy before and after sunset. Parking is a breeze in the morning, and there is no competition for my favourite vantage points. If you are lakeside, the reflections are great in the morning before wind and boat traffic ruin them.

(Continued on page 10)

(Continued from page 9)

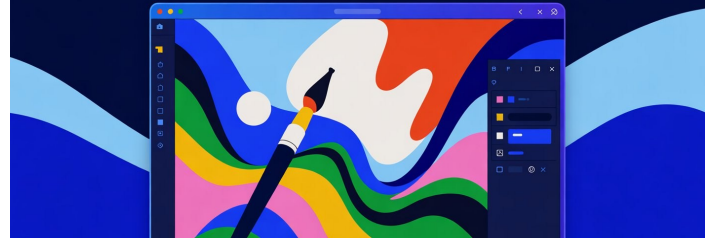
I like fewer people around, but the evening might be better if you want a lot of human interest in your photos. I usually have just enough fishermen, joggers, bikers, or kayakers to add interest if I want it. However, they seldom get in my way.



As a petite lady, I am nervous when strange men approach me in the evening. I am never sure of their intentions (innocent though they may be), and I concentrate more on picking up verbal or physical clues than on my photography. People can be distracting when asking questions about your gear (always the guys) at a critical moment when I'm trying to shift from blue hour settings to dawn settings. If someone says a few words at 5 am, I do not feel threatened, and conversations are usually short since perhaps neither of us has had a coffee! I think most of the baddies are simply not out at that hour.



## Microsoft Paint for Windows 11



## A Modern Take on a Classic

*By Jasmine Blue D’Katz*

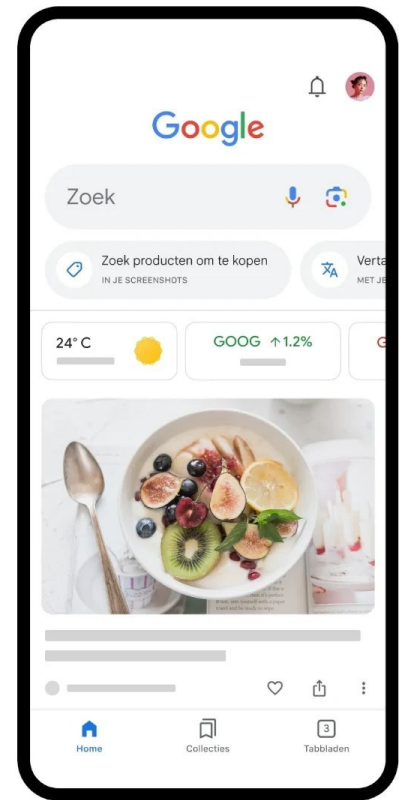
Microsoft Paint for Windows 11 represents a thoughtful evolution of the iconic application that has accompanied Windows users for decades. The refreshed interface embraces Windows 11's design language with rounded corners, updated iconography, and a cleaner layout that feels both familiar and contemporary.

While maintaining its accessibility for casual users, Paint now includes several welcome enhancements. The updated color picker offers greater precision, and the improved text tool provides better typography options. The dark mode support integrates seamlessly with system settings, reducing eye strain during nighttime use.

Despite these improvements, Paint remains deliberately simple compared to professional alternatives. Its lightweight nature means it launches almost instantly, ideal for quick image edits or simple creative projects. The application continues to focus on fundamental tools—brushes, shapes, and basic image manipulation—without overwhelming users with complex features.

Some limitations persist: the application still lacks layer support and advanced selection tools found in more robust image editors. However, this simplicity is precisely what makes Paint enduring and accessible to users of all skill levels.

For quick crops, simple annotations, or nostalgic doodles, Windows 11's Paint delivers exactly what users need—nothing more, nothing less. It's a comforting reminder that sometimes the most basic tools remain the most useful.



**Helps you explore the world around you...**

***By Jasmine Blue D’Katz***

Google Lens is a visual search and recognition tool developed by Google that uses artificial intelligence and computer vision technology. It allows users to search and get information about things they see through their device's camera or from images.

**Some key features of Google Lens include:**

1. Visual search: Point your camera at an object, and Google Lens will identify it and provide relevant information and search results
2. Text recognition and translation: It can recognize and extract text from images, then translate it into different languages in real-time
3. Shopping: Scan products to find where to buy them online and compare prices
4. Plant and animal identification: Point it at flora or fauna to identify species and learn more about them
5. Landmark recognition: Get information about buildings, monuments, and other landmarks

6. Solve homework problems: Point it at math equations or homework questions to get step-by-step solutions

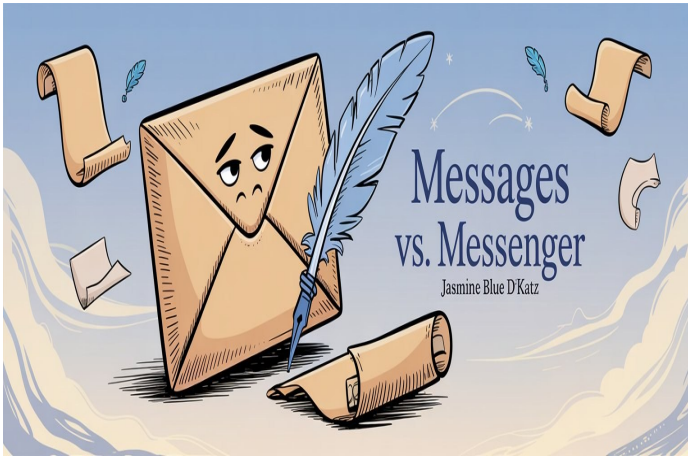
7. Menu scanning: Point it at restaurant menus to see photos of dishes and reviews

**You can access Google Lens through:**

- The Google app on iOS and Android
- The Google Photos app
- The camera app on many Android phones
- Chrome browser on desktop computers
- As a standalone app on some devices

Since my knowledge cutoff is in April 2024, there may be newer features or changes to Google Lens that I'm not aware of. I'd encourage you to check Google's current documentation for the most up-to-date information.

**Presentation Link:** [Google Lens](https://www.google.com/lens/)



Messages and Messengers refer to different types of communication apps/services:

### Messages (SMS/MMS):

The default text messaging app that comes with your phone

Uses your cellular network to send texts and multimedia messages

Requires a phone number and cellular service

Usually identified by names like "Messages," "Text Messages," or "SMS"

Examples: Android Messages, Samsung Messages, Apple Messages

### Messengers (Messaging Apps):

Third-party messaging applications you download

Uses internet connection (Wi-Fi or mobile data) to send messages

Requires creating an account, but not necessarily a phone number

Usually offers more features like video calls, voice messages, group chats, etc.

Examples: WhatsApp, Facebook Messenger, Telegram, Signal, Viber

### Key differences:

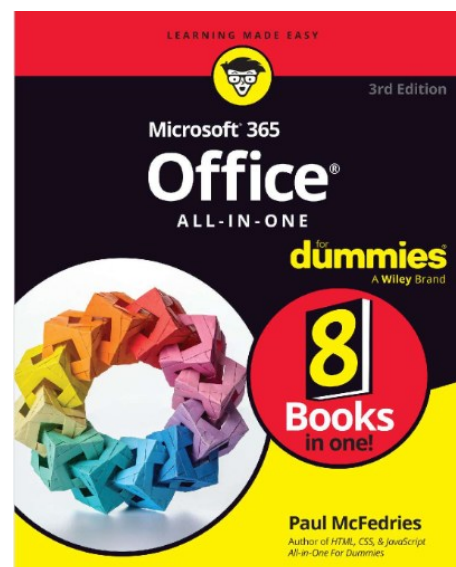
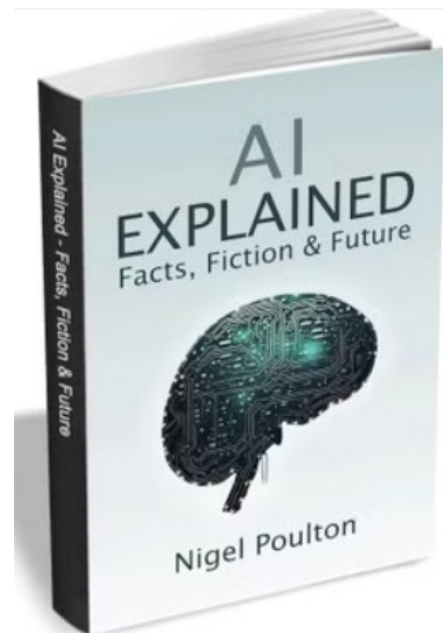
**Network:** Messages use cellular networks, Messengers use internet

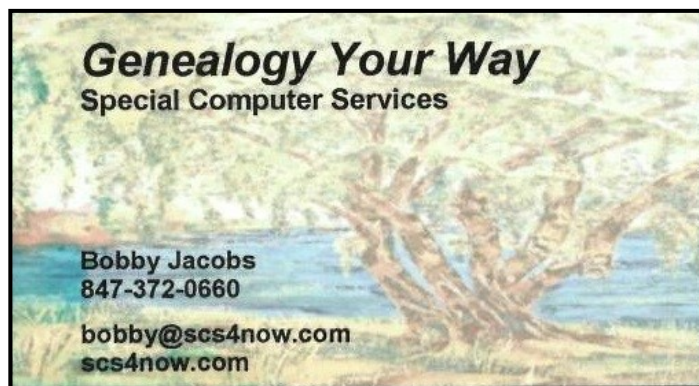
**Features:** Messengers typically offer more advanced features

**Cost:** Messages may count against your text plan, Messengers use data

**Accessibility:** Messages need phone service, Messengers need internet

**Platform:** Messages are phone-based, Messengers often work across multiple devices





# SENIOR PLANET

FROM **AARP**



If you're an older adult, these live online classes are designed just for you! Learn about Finance, Wellness, Fitness, Computers and Technology, and so much more. You will learn so much, and also find a real community of fellow life-long learners. **Need Help** joining a class? Call the free Senior Planet Hotline: 888-713-3495 [Senior Planet](https://www.seniorplanet.org)